



An ISO Certified Company



A Complete Solution Provider

About Us



Flowlines is a leading provider of innovative drive and control technologies for Mobile, Marine, Industrial hydraulic and Pneumatic applications.

We support our client's product development activities from the initial project phase to the complete machine contributing high level technical expertise.

We can provide creating advanced machinery that features stringent technical demands up to the quality standards.

In the manufacture of hydraulic components, We offer a broad, Innovative range of products and complete tailor made solutions in hydraulic and Pneumatic.

Hydraulics can be used wherever high force and movement need to be controlled. We create systems that reveal the immense flexibility of modern hydraulics when combined with easy-to-use electronic controls.

To operate under extremely unfavorable conditions we demonstrate the ability of hydraulic solutions to various requirements.

We incorporate the improvements that occur in electronics, Microprocessor technology and sensor techniques in the design of new products.

By using modern technology, we are able to position the control elements at the precise point where hydraulic power needs to be converted into force.

We can shorten the development process considerably, optimise development procedures With help of an advanced CAD system (ProE) and modern development tools to get instant solutions more rapidly.

The high level technical expertise is our focus on research and development.

Our strength is to provide a complete solution by offering Special Purpose Machines.

MINI POWER PACK



HYDRAULIC POWER PACK



MOBILE FILTRATION UNIT



HYDRAULICS CYLINDERS

TELESCOPIC CYLINDER



HYDRAULIC CYLINDER



MOBILE HYDRAULIC CYLINDER



MOBILE HYDRAULICS

MOBILE VALVES



TAIL LIFTS



MOBILE FILTRATION UNIT



MARINE HYDRAULICS





Gear Pump



Vane Pump



Vane Pump (Variable)



Variable Displacement
Axial Piston Pump



Directional Control Valve
(CETOP-R02, 03 & 05)



Pilot Operated
Directional Control Valve



Solenoid Operated
Directional Control Valve
With Monitored Spool



Lever Operated
Directional Control Valve



Explosion-Proof Version
Solenoid Operated
Directional Control Valve



Check Valve (In-Line)



Check Valve
(Sub-Plate Mounted)



Bank Valve



Pressure Control Valve
(knob Type)



Pressure Control Valve
(Solenoid)



Flow Control Valve
(Sub-Plate Mounted)



Modular Pilot Operated
Pressure Relief Valve



Direct Operated Three-Way
Pressure Reducing Valve



Modular Sequence Valve



Pilot Operated Check Valve
(CETOP-R02, 03, 05 & 07)



Modular Flow
Restrictor Valve



Electric Fast / Slow Speed
Selection Valve



Logic Element



Hydraulic Cylinder



Hydraulic Power Pack



Proportional Control Valve
With Remote Electronic
Control Card



Proportional Control Valve
With Integrated
Electronics (Directional)



Proportional Control Valve
With Integrated
Electronics (Pilot Operated)



Direction Valve With
Proportional Control Feedback
And Integrated Electronics



Pilot Operated Pressure
Reducing Valve With Electric
Proportional Control



Proportional Control Valve
With Integrated
Electronics (Pressure Control)



Proportional Control Valve
With Integrated Electronics
(Pressure Control-Closed Loop)



Proportional Control Valve
With Explosion - Proof



Flow Control Valve With
Electric Proportional Control



Pilot Operated Flow Control Valve
With Electric Proportional Control



Balancing Valve With
Proportional Control



Servo Valve



Electronic Control Unit



Analogue Positioning Card
For Stroke Control In
Closed Loop Systems With
Digital Feedback



Pressure Transducer



Servo Cylinder

Duplomatic is the leading point of reference within Italy for design and production of devices, components and units for Industrial automation and Hydraulic Engineering.

Duplomatic started to develop and manufacture its own line of hydraulic components, thus branching out from its early aims and acquiring new innovative technical solutions both in the components and plant sectors.

Product Range

- Pumps
- Pressure Control Valves
- Flow Control Valves
- Hydraulic Power Pack
- Directional Control Valves
- Check Valves
- Subplates & Manifolds
- Modular Valves
- Cylinders
- Proportional Valves
- Electronic Control Units
- Pressure Gauges, Filters, & Accessories



0.25 - 0.5 Series Micro Gear Pumps



Group	Displacement (Cc/rev)	Pressure (bar)
0.25	0.19 to 0.64	190
0.5	0.5 to 1.50	190

Extensive range and very high performance of these pumps integrated in to micro power packs make them ideal for many applications from aerospace to marine, medical to automotive.

1P Series Mini Gear Pumps



Group	Displacement (Cc/rev)	Pressure (bar)
1P-K1P	1.1 to 8	230
EK1P	0.9 to 5.8	230

High production rates, performance consistency and absolute reliability ensure this a benchmark product for the hydraulic power pack market.

ALP / GHP Series Gear Pumps



Group	Displacement (Cc/rev)	Pressure (bar)
ALP1/GHP1	1.4 to 13.8	250
ALP2/GHP2	4.5 to 35.2	250
ALP3/GHP3	20 to 87	230
ALP4	87 to 200	240

This product range includes pumps of different displacements (up to 200cc/rev) in a full aluminium configuration (ALP) & Cast iron front flange and rear cover(GHP), able to withstand medium to high pressures and using different versions of flanges (European, German and SAE), porting and shafts. Used in industrial and mobile sector.

ALP / GHP Series Multiple Modular Gear Pumps



Group	Displacement (Cc/rev)	Pressure (bar)
ALP/GHP	1.9 to 200	250

Modularity and flexibility are the characteristics of these pumps. They allow the assembly of pump modules of the ALP and GHP (from 0.25 to 4) enabling solutions to wide range of application requirements.

High / Low Pumps



Group	Displacement (Cc/rev)	Pressure (bar)
1st Stage	1.1 to 8.3	250
2nd Stage	3.7 to 35.2	Pressure set by unloading valve

Ideal pump for applications which require a fast approach and/or return of the actuator at low loads and slow motion of the actuator at high loads. e.g log splitters, compactors and presses. Volumetric and mechanical efficiencies as well as low noise levels are further benefits of this range.

ALPC / GHPC Series Short Multiple Pumps



Group	Displacement (Cc/rev)	Pressure (bar)
ALPC/GHPC	1.4 to 35.2	270

For reduced axial layout. Available with both flanges and covers in aluminium or cast iron.

ALM / GHM Series Gear Motors



Group	Uni-Directional cc/rev	Bi-Directional cc/rev	Pressure (bar)
ALM1/GHM1	2.8 to 13.8	2.8 to 11	250
ALM2/GHM2	4.5 to 35.2	4.5 to 28.2	250
ALM3/GHM3	20 to 87	22 to 87	230

For medium to high pressure rates the ALM series is ideal for mobile and industrial sectors. Mono-directional and bi-directional with internal and external drain available. The GHM series offers identical configurations to the ALM series but more robust thanks to the cast iron front flange and rear cover.

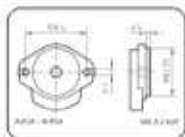
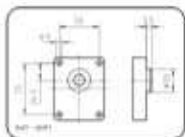
Special Pumps And Motors



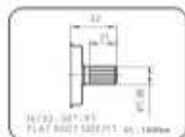
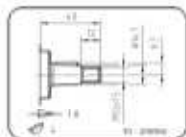
Thanks to the extreme specification and to the know how of application. Marzocchi pompe had always a strong interest in evaluating special Request from the customers. Requirements that if technically And economically feasible have lead to the development of several solution of special pumps and motors and integrated units as well.

Pump will be supplied with relief valve, anticavitation valves, proportional relief valve, priority valve, ext., as per request of the application.

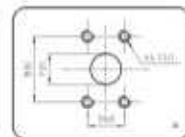
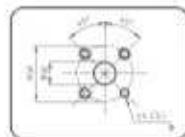
Flanges



Shafts



Ports



Different type of flanges (European, German and SAE) porting and shafts available.

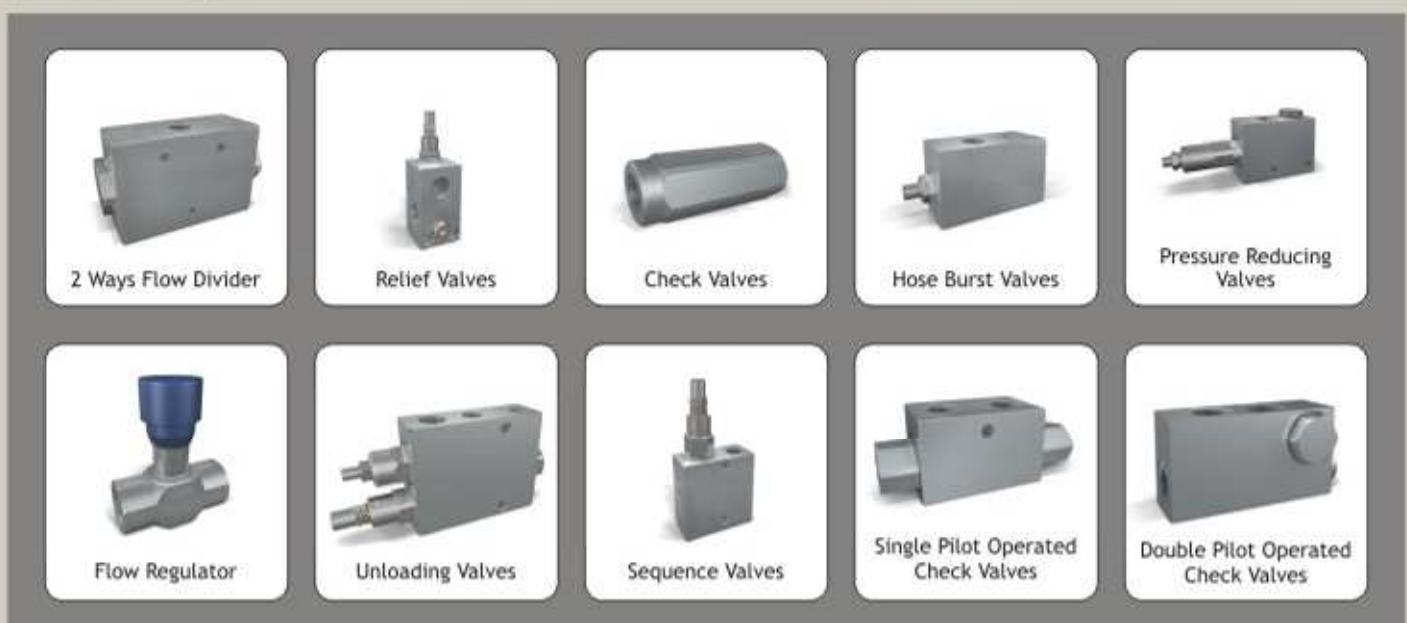


FILTERS

The OMIT range of filters fits into return lines of hydraulic circuits, suction lines and medium/high pressure lines. Depending on the models, they can be equipped with accessories like DIFFERENTIAL CLOGGING INDICATORS (VISUAL AND ELECTRIC), PRESSURE GAUGES, PRESSURE SWITCHES, BY-PASS VALVES etc. All filters have conformity with the corresponding ISO regulations. OMIT can customize some kind of filters.

ACCESSORIES

The OMIT range of accessories is mostly aimed to be fitted on the so called "Tank Environment". Steel plate oil tanks (CF & CFP series), Die-cast aluminum oil tanks (CP series), Electric oil level gauges, Visual level gauges (LG series), Plastic oil filters, Breathers, Chrome plated oil fillers with air breather cap (Even pressurized) with lockable steel basket (TR series) showing customer logo. Pump supports SP series. Other OMIT accessories are PRESSURE GAUGES, PRESSURE GAUGE ISOLATORS, PUMP SUPPORTS AND MOBILE FILTRATION GROUPS.



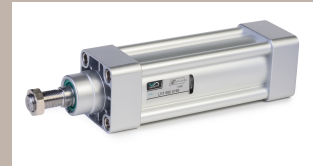
Components for Pneumatic Automation

Vesta's concept of Quality:

A belief that we can always do things better and that resultant benefits for customers may strongly contribute to the success of the company.

Over 25 years of experience in production of pneumatic components leads Vesta to provide the market with very competitive and reliable solutions.

A whole team working next to you in order to grant the right answer



PNEUMATIC CYLINDERS



FRL COMPONENTS



SOLENOID VALVES



PNEUMATIC GRIPPER



MULTIPOLAR CONNECTION SYSTEM



NAMUR VALVES



ROUND CYLINDERS



STAINLESS STEEL CYLINDERS



PNEUMATIC SLIDES



CARTIRAGE CYLINDERS



Peters Indu-Produkt GMBH belongs to the international recognized manufacturers of PNEUMATIC, HYDRAULIC, SENSOR AND AUTOMATION products. The name of Peters stands for technical progress with new trend-setting products. Innovation and exemplary quality are world-wide recognized by our partners and customers. Quality checks are not just made after the product has been manufactured, rather during every stage of process-oriented production.

Interface Technology

- Coupling Relay
- Optical Coupler Module

Connectors

- Solenoid Connectors
- Cable Adapters
- Sensor Connector (Moulded & Field Attachable)
- DC Illuminated Gaskets

Pressure Vacuum Technology

- Electronic Pressure Transmitter/ Switches
- Hydraulic & Pneumatic Pressure Switches
- Miniature Pressure Switches

Sensor

- Proximity Sensor



EWO COMPONENTS FOR COMPRESSED AIR INSTALLATIONS

GERMANY
www.ewo-stuttgart.de

Air Preparation : Standard



Blowguns



Air Preparation : Drain Valves





2/2 Way Ball Valves With Threaded Connection



3 & 4 Way Ball Valve Combinations With Threaded Connections



Ball Valve Combinations With Threaded Connections



2/2 Way Ball Valves With SAE/ISO/CETOP Connection



3/2 Way Selector Ball Valve With Threaded / SAE Connection



2/2 Way High Temperature Ball Valves With Threaded Connections



2/2 Way Highest Pressure Ball Valve 800 Bar With 500°C



Check Valve with SAE Connection Pattern Connection Flanges



Needle Valves For Piping Systems Assembly With Threaded Connections / For Manifold Mounting / For Cartridge Assembly



Check Valves For Piping Systems Assembly / For Manifold Mounting



Locking Devices / Proximity & Limit Switches



Combinations / Detent

CONVERSION TABLE

Mass Masse Masse Masa	kg	x 2.21	⇔	lb	Pressure Druck Pression Presion	Bar	x 100	⇔	kPa	Speed Vitesse Velocdad				
		x 10	⇔	N*			x 100,000	⇔	Pa					
		x 35.27	⇔	oz			x 14.5	⇔	psi					
	lb	x 0.45	⇔	kg		kPa	x 0.01	⇔	bar		ft/s	x 0.083	⇔	in/s
		x 4.54	⇔	N*			x 1000	⇔	Pa			x 0.31	⇔	m/s
		x 15.96	⇔	oz		Pa	x 0.145	⇔	psi		in/s	x 0.083	⇔	ft/s
	N*	x 0.1	⇔	kg			x 0.00001	⇔	bar		("/s)	x 0.0254	⇔	m/s
	x 0.22	⇔	lb	psi	x 0.001	⇔	kPa	m/s	x 3.28	⇔	in/s			
	x 3.53	⇔	oz		x 0.000145	⇔	pa		x 39.37	⇔	ft/s			
	oz	x 0.03	⇔	kg		x 0.069	⇔	bar	Acceleration Acceleracion					
	x 0.06	⇔	lb			x 6.9	⇔	kPa	ft/s'	x 0.083	⇔	in/s'		
	x 0.28	⇔	N*			x 6896.9	⇔	Pa		x 0.31	⇔	m/s'		
Length Lange Longueur Longitud	ft	x 12	⇔	in	Temperature Temperatur Temperature Temperatura	°C	(°Cx1.8)+32	⇔	°F	ft/s'	x 0.083	⇔	in/s'	
		x 0.31	⇔	m			+273.16	⇔	°K		x 0.31	⇔	m/s'	
		x 304.8	⇔	mm		°F	(°F-32)x0.56	⇔	°C	in/s'	x 0.083	⇔	ft/s'	
	in	x 0.083	⇔	ft			(°F-32)x0.56+273.16	⇔	°K	("/s')	x 0.0254	⇔	m/s'	
		x 0.0254	⇔	m		°K	(°K-273.16)x108+32	⇔	°F	m/s'	x 3.28	⇔	in/s'	
		x 25.4	⇔	mm			-273.1	⇔	°C		x 39.37	⇔	ft/s'	
	m	x 39.37	⇔	in										



UNITED ARAB EMIRATES

QATAR

INDIA

Tel : +971 4 2676286

Fax : +971 4 2676285

P.O. Box : 47559

Dubai - United Arab Emirates

Email : flowline@emirates.net.ae

www.flowlines.ae

